

CABINET LOCK

C/SFB
| 31.59 | Xt7 |

Standard features include

Stainless Steel Striker
150kg (330lb) holding force

Flexible Alignment
Has 5mm vertical/horizontal adjustment after installation

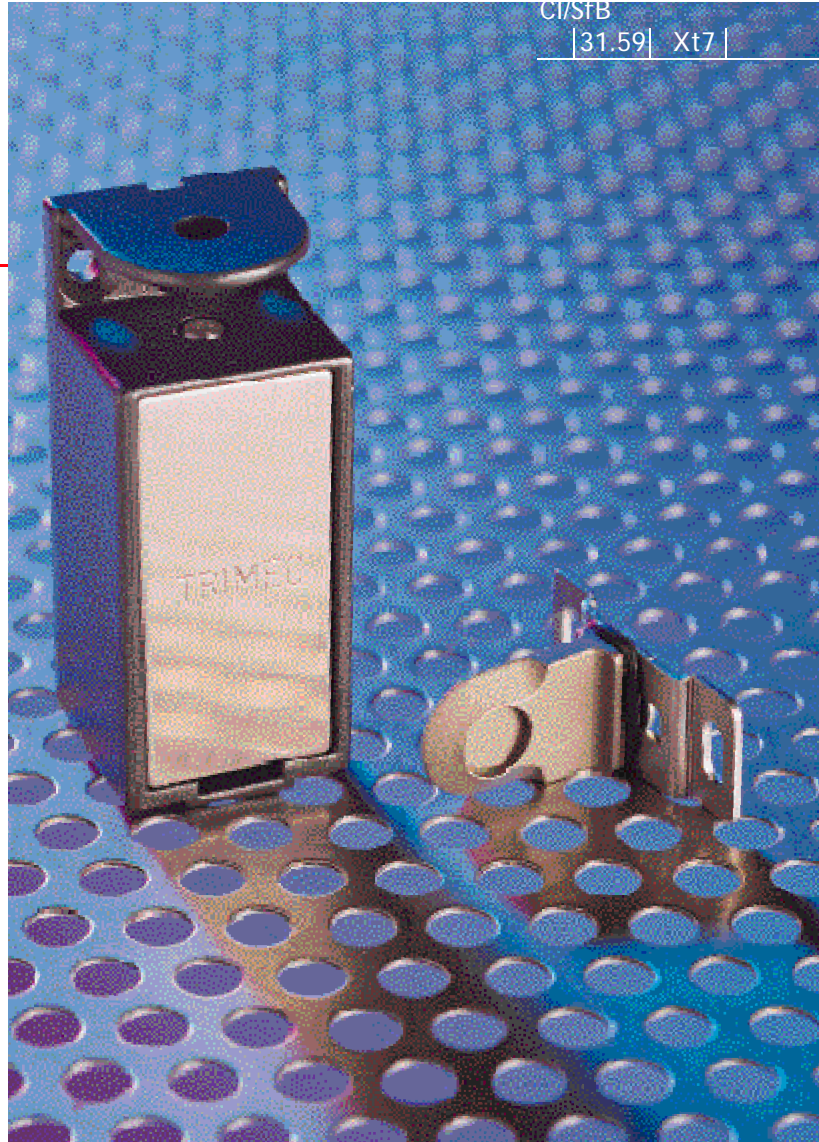
Power to Lock/Power to Open
Rapid function change over

Low Current Consumption
175mA - 12v DC continuous ($\pm 15\%$)
88mA - 24v DC continuous ($\pm 15\%$)

Compact Cast Aluminium Body
72mm x 30mm x 28mm

Approvals
CE approved
BS EN 50081-1 and BS EN 50082-1

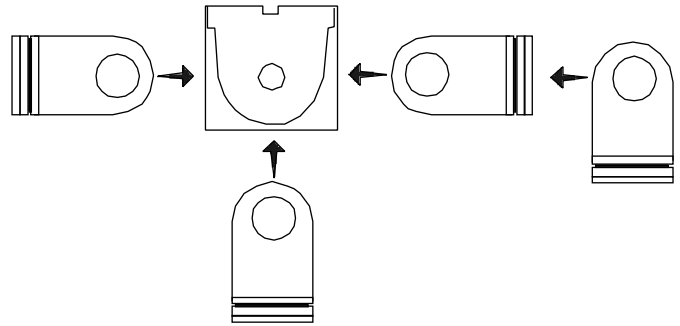
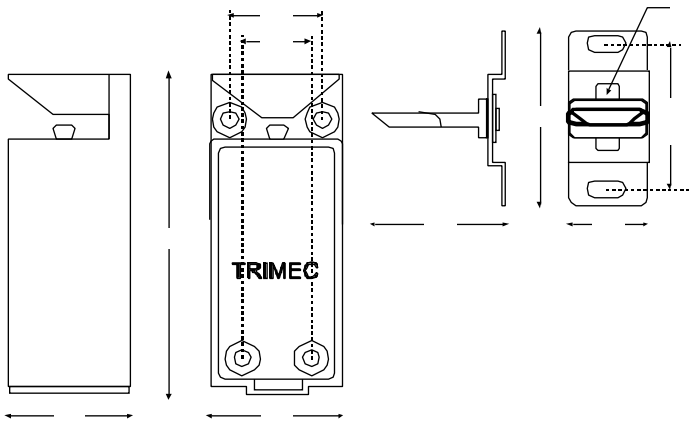
3 Year Guarantee



The compact sized TRIMEC EL110 Cabinet Lock is designed to be fitted in display cases, cabinets and lockers with both swing or sliding doors requiring electronic control and where keys are not a practicable solution.

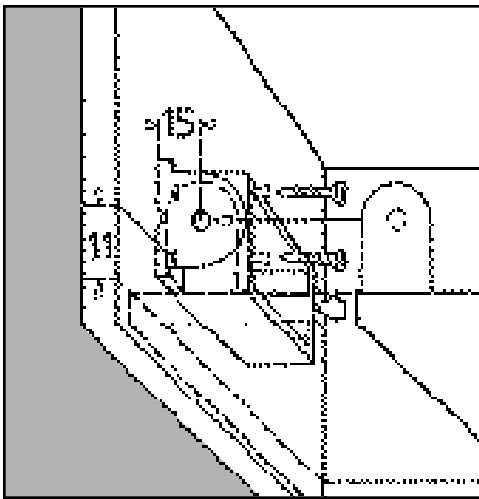
The Innovative design enables the lock to be fitted vertically or horizontally whilst receiving the striker plate from the front, side or slide entry positions.

The EL110 offers maximum flexibility and alignment adjustment whilst maintaining an excellent level of security for its size.

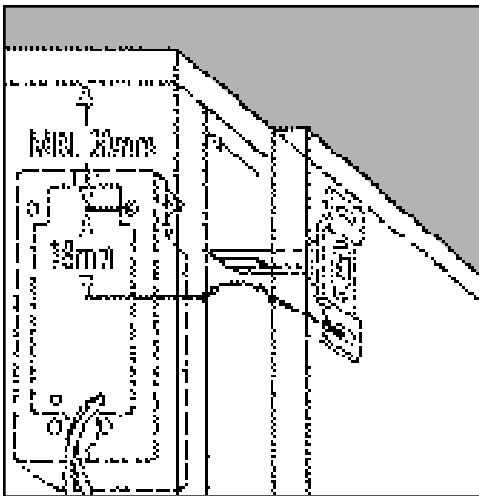


SLIDING DOORS

1 Fit door lock first

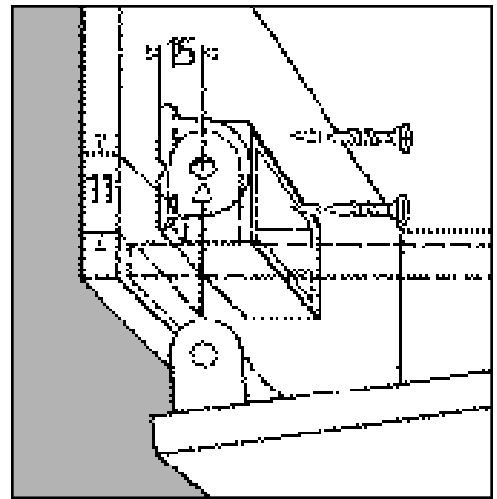


2 Fit striker second
(Transfer 18mm line to door)

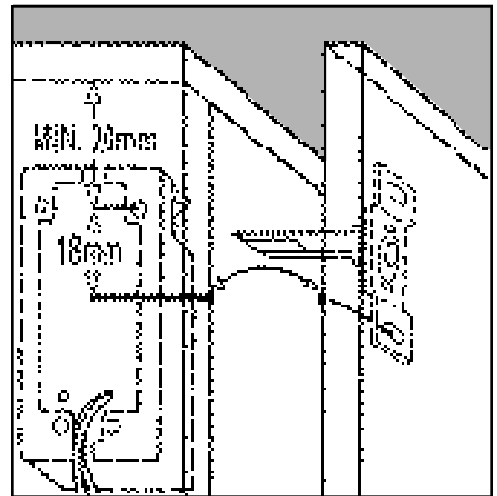


SWING DOORS

1 Fit door lock first



2 Fit striker second
(Transfer 18mm line to door)



Ordering Information

DESCRIPTION	FUNCTION	CODE	FUNCTION	CODE
12v DC	Fail Open - Power to Lock	EL111	Fail Secure - Power to Open	EL112
24v DC	Fail Open - Power to Lock	EL113	Fail Secure - Power to Open	EL114

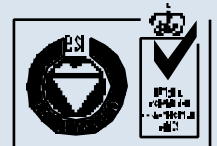


Telephone **01202 676262** Facsimile **01202 680101**

E-mail iec.uk@pobox.com Web site www.iecltd.co.uk

INTERNATIONAL ENGINEERING COMPANY LIMITED

Harwell Road Nuffield Estate Poole Dorset BH17 0BD Great Britain



Certificate No. RS 00117