

# SURFACE MOUNT ELECTRIC LOCK

## Standard features include

High Physical Security

1,350kg (3,000lb) holding force

Side Load Operation

Operates and releases freely with up to 545kg (1,200lb) of side pressure

Self Latching

Will self-latch without power for fire applications

Robust Construction

Stainless steel lock components

Anti-tamper

Deadlock protected against tampering

Dual Monitoring

Independent for strike engagement (coded reed switch) and solenoid operation

Multiple Voltage Input

12 and 24vDC selectable input with back EMF and reverse polarity protection

Low Current Consumption

Volts	Current - Activate	Current - Hold (after 0.5 secs)
12v DC	750mA	375mA
24v DC	375mA	187mA

Options

Stainless steel cover

Concealed fixing kit for striker

Escape overrides for surface mount

Fail Secure/PTO versions

Approvals

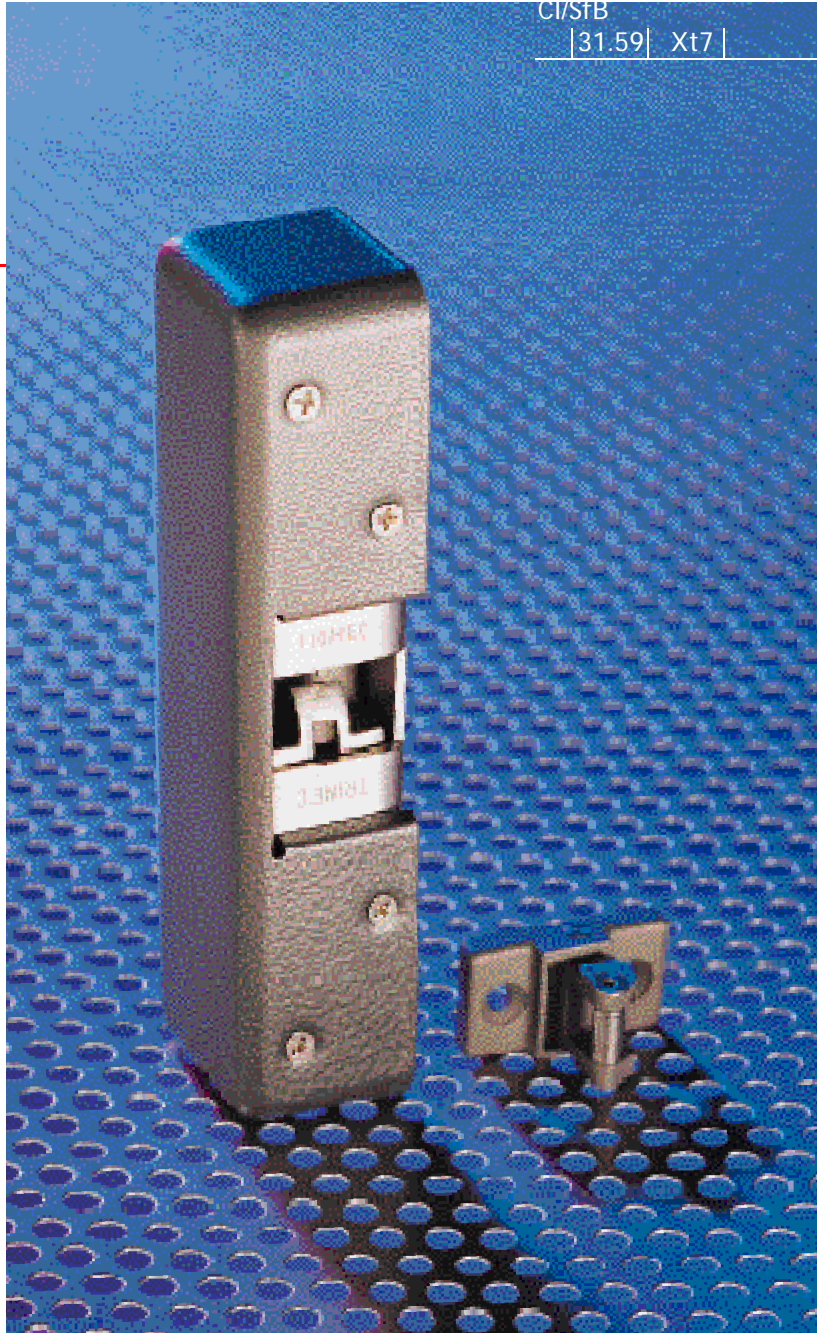
UL1034 (highest level)

Tested to 2 million cycles

CE approved

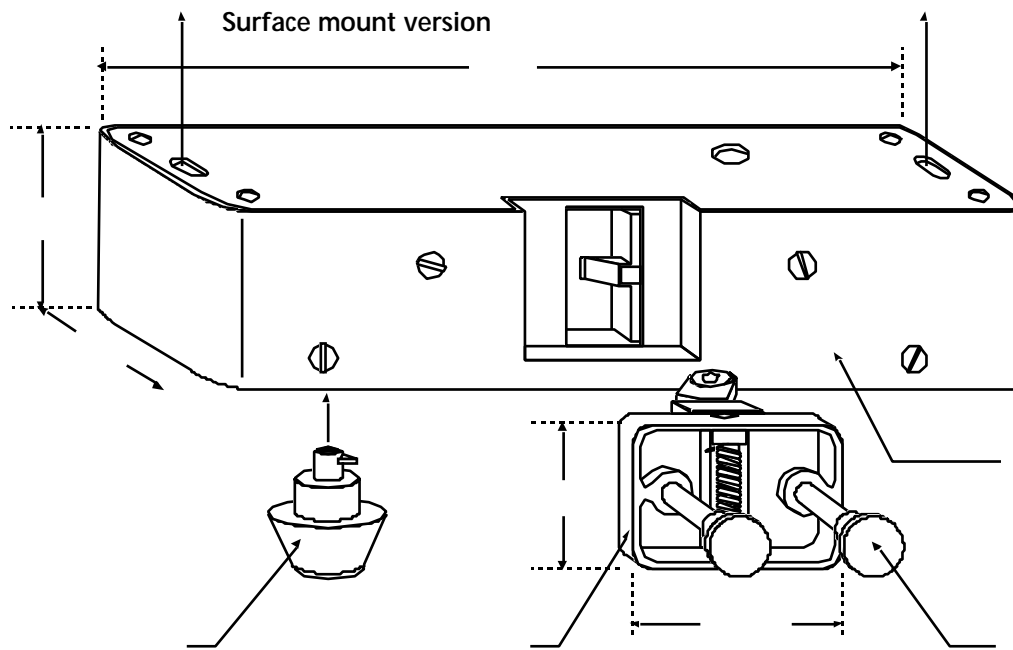
BS EN 50081-1 and BS EN 50082-1

3 Year Guarantee



The TRIMEC ES600 patented Hook Lock advances the integration of locks and smart electronic technology. This surface or mortice mounted lock replaces conventional or electro magnet locks and can be used on single action or sliding doors.

The ES600 produces a physical interlock between a rotating jaw and the strike plate offering true Fail Open/PTL and Fail Secure/PTO operation under high side load applications.



**Mortice mount version**  
 Face plate dimensions  
 258.5mm (L) x 52mm (W) x 3mm (D)  
 Back box dimensions  
 212mm (L) x 46mm (W) x 52mm (D)  
 Overall depth 55mm

## Technical Data General

### Electrical

- 750mA @ 12v DC for 0.5 seconds - 375mA thereafter for continuous use (±15%)
- 375mA @ 24v DC for 0.5 seconds - 187mA thereafter for continuous use (±15%)
- Strike Engagement Monitor  
N/O Contact rated @ 200mA
- Solenoid Operation Monitor  
C/O Contact rated @ 3mA

The ES600 can be installed as either Power to Lock or Power to Open and can be surface mounted either vertically and horizontally. Whilst the lock is designed to have a holding force of 1,3500kg (3,000lb) it is also designed to operate freely without "jamming" with side loads of 545kg (1,200lb) exerted on the door. The ES600 has a continuously rated solenoid.

Installation  
**A metal template is provided for accuracy. Under no circumstances should the ES600 be used as a door stop.**

## Ordering Information

**Surface mounted. All models are PTL/PTO reversible and 12 to 24vDC complete with dual monitoring.**

DESCRIPTION	FUNCTION	CODE	FUNCTION	CODE
Through bolt fixing and grey painted mild steel cover	Fail Open - Power to Lock	<b>ES6SL-M</b>	Fail Secure - Power to Open	<b>ES6SO-M</b>
For stainless steel cover add 'S'; to end of code (eg ES6SO-S).				

**Options**

Concealed fixings kit for striker		<b>ES6CSK</b>		
Manual over rides	Single position - momentary	<b>ES6S01M</b>	Two position - ON/OFF isolation	<b>ES6S02M</b>
Fail Secure/PTO models only	Thumb Turn - momentary	<b>ES6S0KM</b>		

Silver anodised aluminium Housings supplied with electric locks already fitted are also available in 1m and 2m lengths.

**Mortice mounted. All models are PTL/PTO reversible and 12 to 24vDC complete with dual monitoring.**

Stainless Steel face plate	Fail Open - Power to Lock	<b>ES6ML</b>	Fail Secure - Power to Open	<b>ES6MO</b>
----------------------------	---------------------------	--------------	-----------------------------	--------------



**Telephone 01202 676262 Facsimile 01202 680101**  
 E-mail [iec.uk@pobox.com](mailto:iec.uk@pobox.com) Web site [www.iecltd.co.uk](http://www.iecltd.co.uk)  
**INTERNATIONAL ENGINEERING COMPANY LIMITED**  
 Harwell Road Nuffield Estate Poole Dorset BH17 0BD Great Britain

