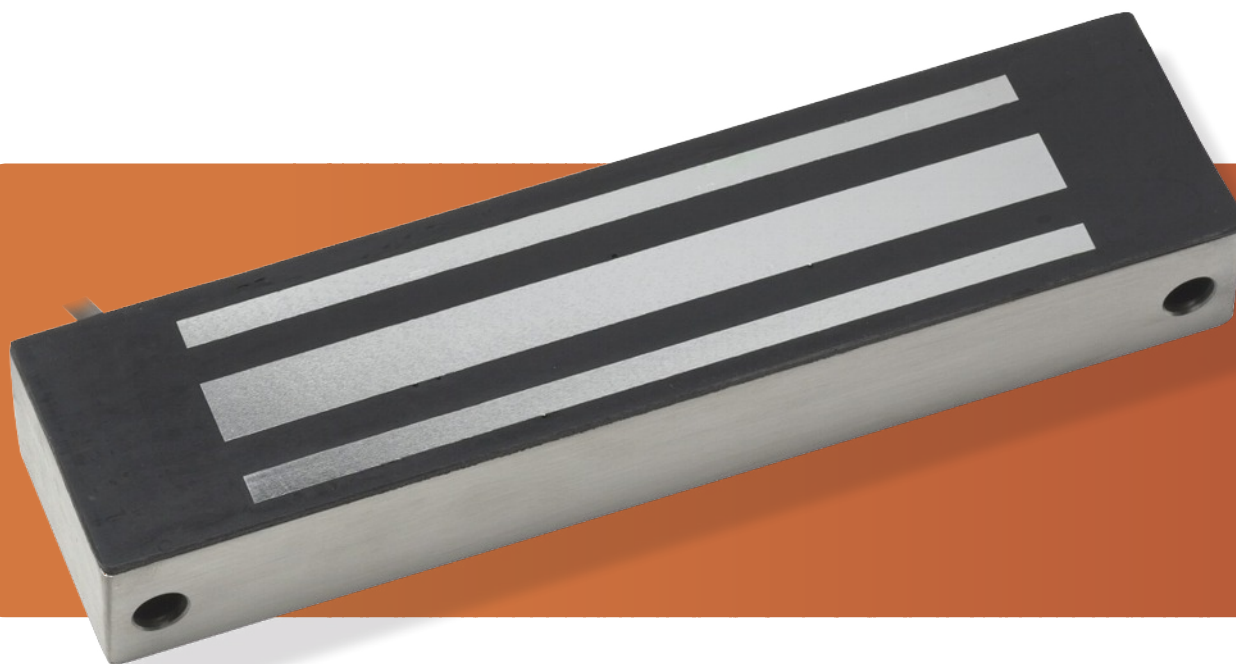


# Midi Stainless Steel Magnet

## EM10006S

- Operating voltage: 12Vdc
- Brushed stainless steel
- Current draw: 340mA at 12Vdc (at temperature 20°C)
- Voltage tolerance: ±15%
- Operating temperature: -10 to 55°C (14 to 131°F)
- Humidity: 0 to 95% non-condensing
- Lock's surface temperature: Current temperature ±20% (when power is on)
- Holding force: Up to 800lbs (363kg)
- Weight: 3.0kg (approx)



DIMENSIONS	LENGTH	WIDTH	DEPTH
Magnet	216	52	30
Armature Plate	185	45	14

VARIATIONS	
EM10006S	12Vdc
EMU10006S	12 or 24Vdc

All dimensions in mm