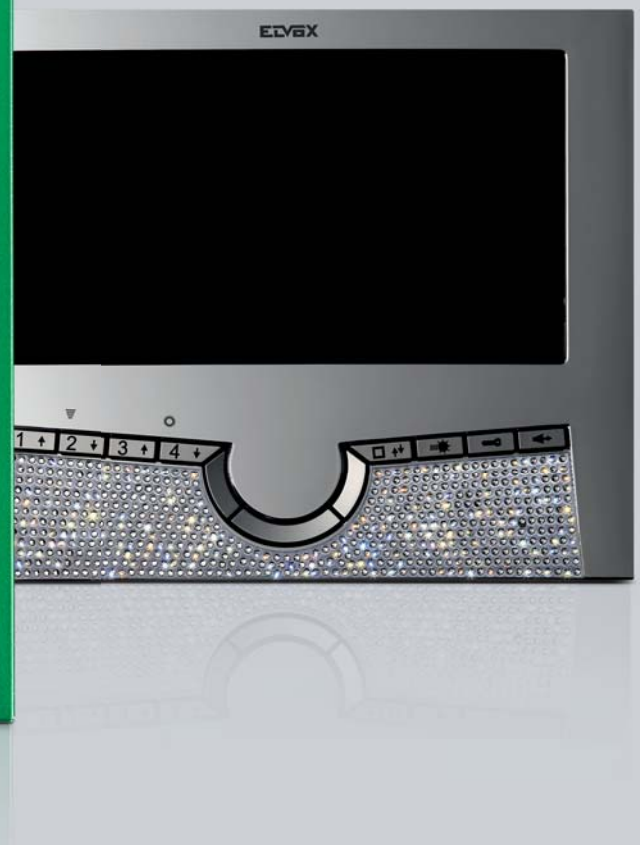


# EDVAX

 **VIMAR** group

MADE WITH SWAROVSKI® ELEMENTS



## 7200 SERIES

Flush wall-mounting open-voice monitor  
with 7" widescreen TFT LCD colour display



# 7200 SERIES

Flush wall-mounting open-voice monitor  
with 7" widescreen TFT LCD colour display



## Expand the **horizons**

A field of vision which is wider than ever before.  
The limitations of conventional frames have been overcome at last,  
displaying a more panoramic view and revealing details that were  
previously out of shot.  
Revolutionary optics from every point of view.

**7" 16:9**  
**widescreen**  
**LCD monitor**



SOUNDSYSTEM



DUEFILIELVOX



DIGIBUS

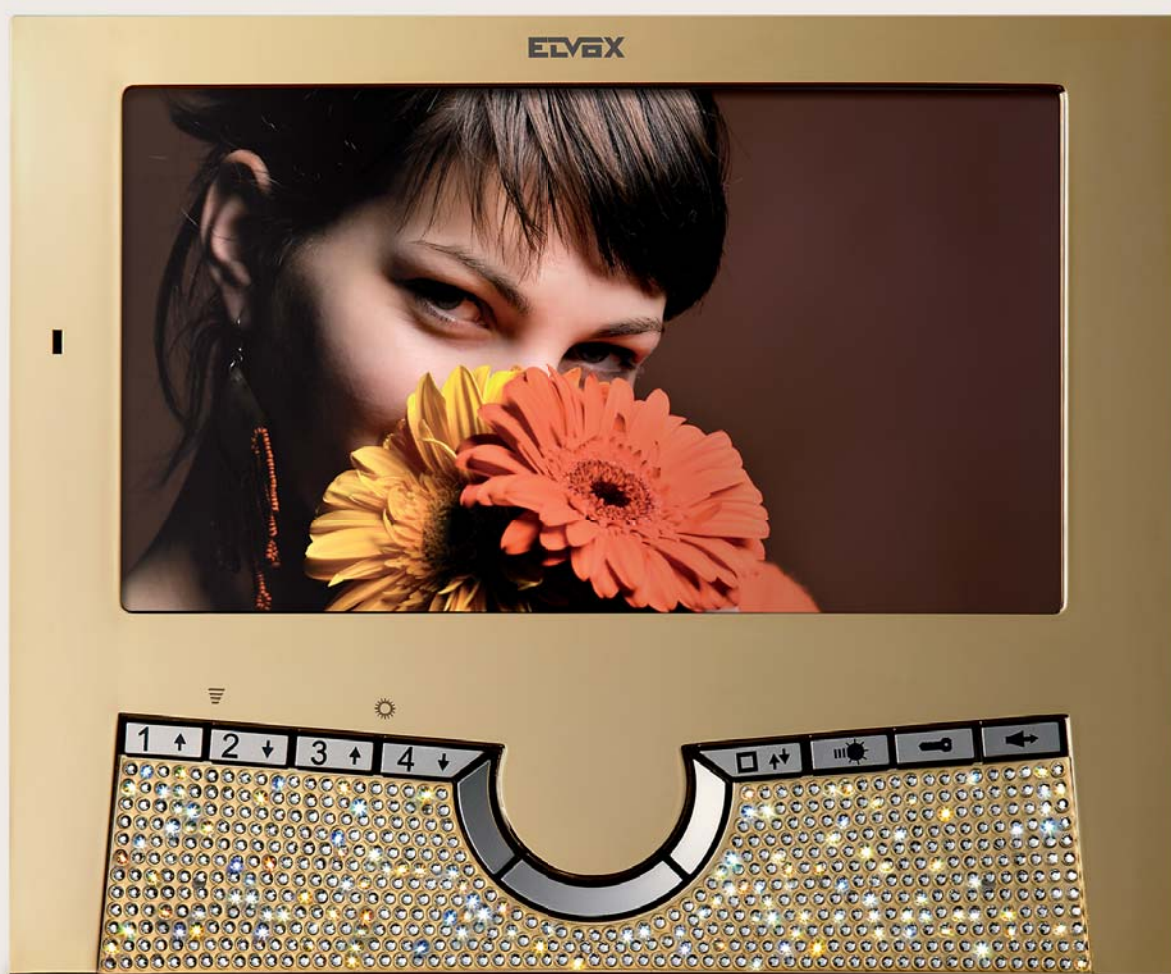
# EDVAX

 VIMAR group



# 7200 SERIES

Flush wall-mounting open-voice monitor  
with 7" widescreen TFT LCD colour display



Cutting-edge technology meets  
**the magic of sparkling crystal**

The Dreams Collection is the offspring of an encounter between Elvox advanced technology and the brilliant creations of SWAROVSKI® ELEMENTS.

**SWAROVSKI®**  
**elements**



SOUND SYSTEM



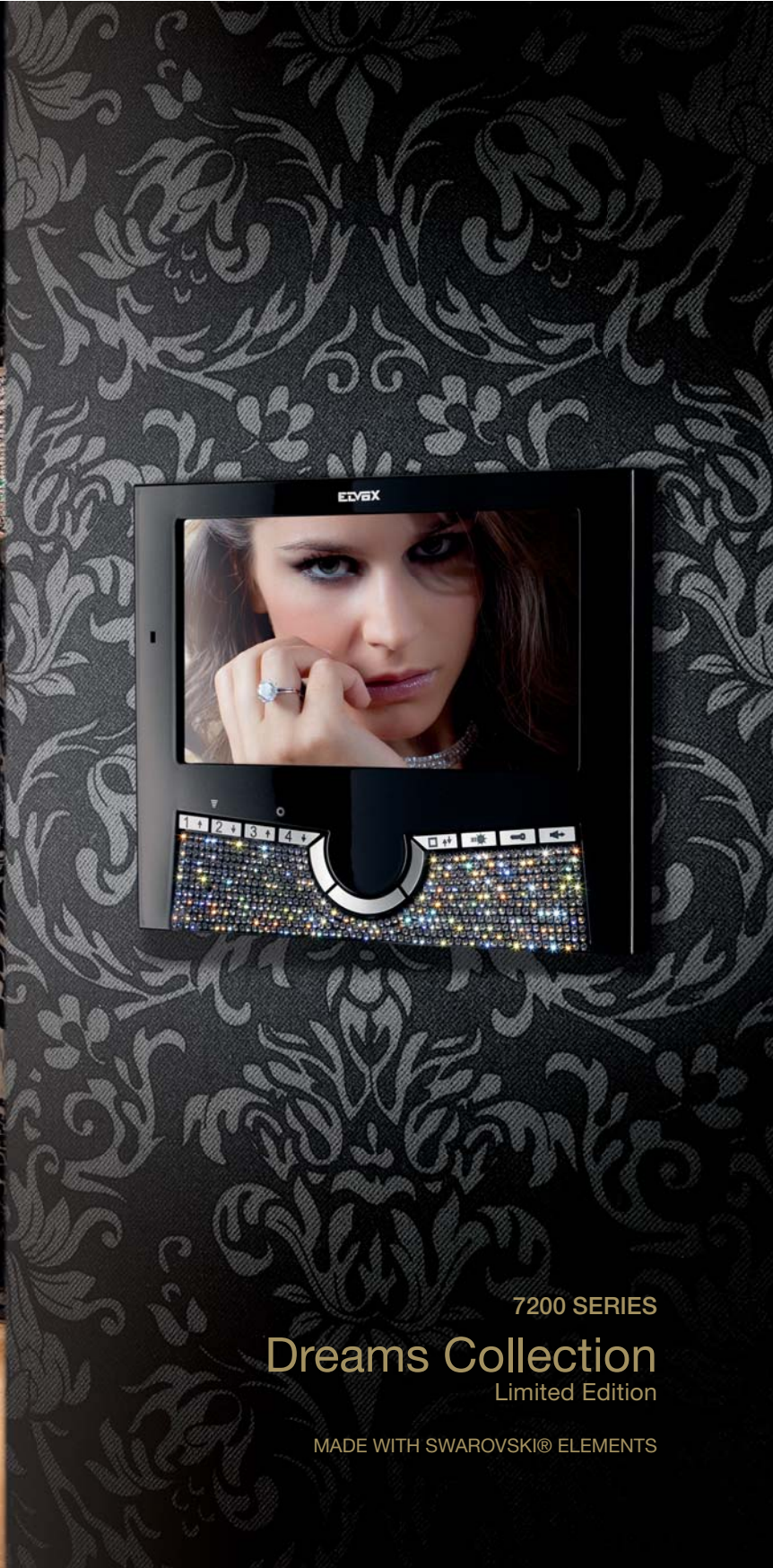
DUEFILIELVOX



DIGIBUS

# EDVAX

 VIMAR group



7200 SERIES

## Dreams Collection

Limited Edition

MADE WITH SWAROVSKI® ELEMENTS

# 7200 SERIES

Flush wall-mounting open-voice monitor  
with 7" widescreen TFT LCD colour display



## Flush wall-mounting open-voice monitor with 7" widescreen TFT LCD colour display

- 7" high-resolution widescreen LCD monitor, for crystal-clear digital images.
- Wider field of vision due to the 16:9 aspect ratio, providing a clear view of visitors positioned at each side of the frame.
- The external appearance of the monitor can be personalised with a wide range of cover finishes and colours. Customers are sure to find the right solution whenever they decide to change the furniture or interior decor of the room.
- Highly functional keyboard with LED backlighting for easy operation even in poor lighting conditions.
- Brightness adjustment, ringtone volume and a choice of 7 different melodies.
- Equipped with dedicated push-buttons for self-start, stair light, door lock release and reply functions.
- Open voice system with "hands-free" function (no need to keep the reply button pressed during the call).
- Possibility of operating up to four auxiliary functions in the Two-Wire and Digibus versions, or intercommunicating calls in the Two-Wire version, using the buttons labelled 1-2-3-4.
- Green LED "door open" signal.
- Privacy function which disables the ringtone. In the Two-Wire and Digibus versions, when the ringtone is disabled a red LED will indicate up to 5 unanswered calls by emitting a series of flashes.
- Installation requires the flush-mounted back box type 7249, made of ABS plastic. It is supplied with a cover to prevent the ingress of mortar and grout during masonry work. The dimensions of the hole for flush wall-mounting are 189x160x52 mm.

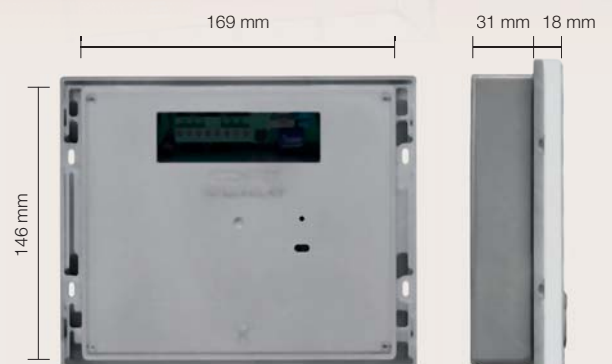


Monitor not supplied with desktop conversion kit

available also in  
**desktop conversion kit**

# EDVAX

VIMAR group



# 7200 SERIES

Flush wall-mounting open-voice monitor  
with 7" widescreen TFT LCD colour display

MADE WITH SWAROVSKI® ELEMENTS



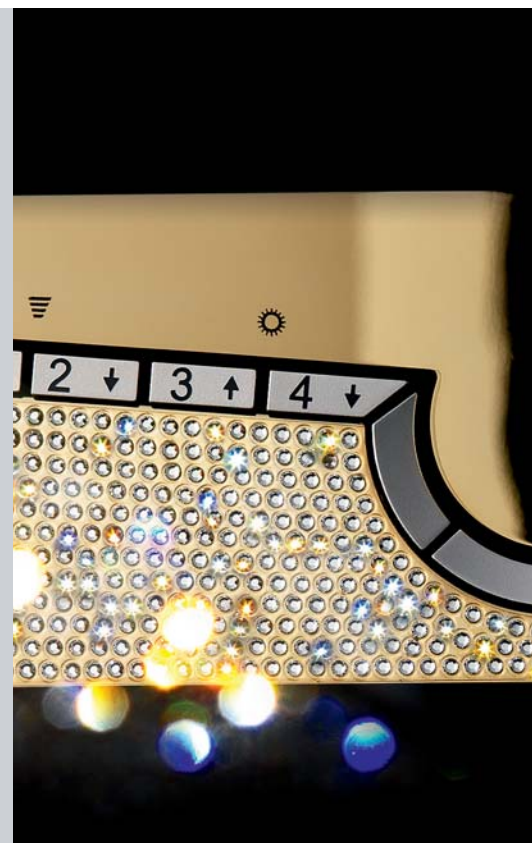
Gold



Chrome



Black



## Metallic



Blue



Silver



Green



Black



Bronze

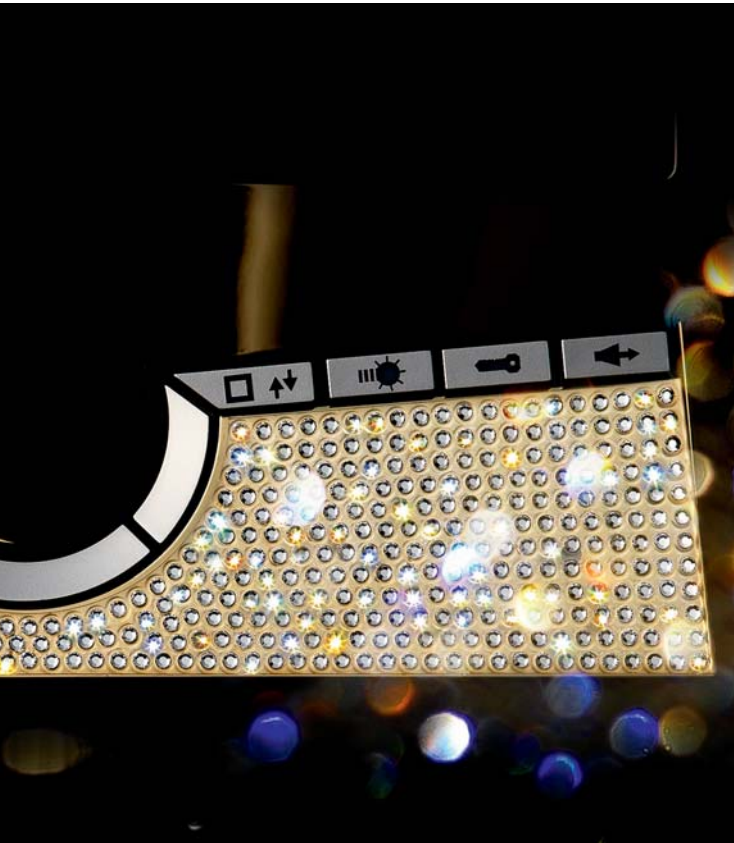


Red

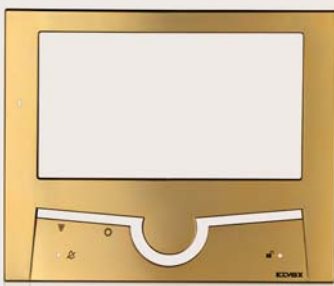
## Set the imagination free

Metallic and chrome finishes. A vast range of aesthetic solutions that offers plenty of scope for personalising the customer's chosen solution based on their own taste and creativity, to transform a technical device into an original furnishing accessory.



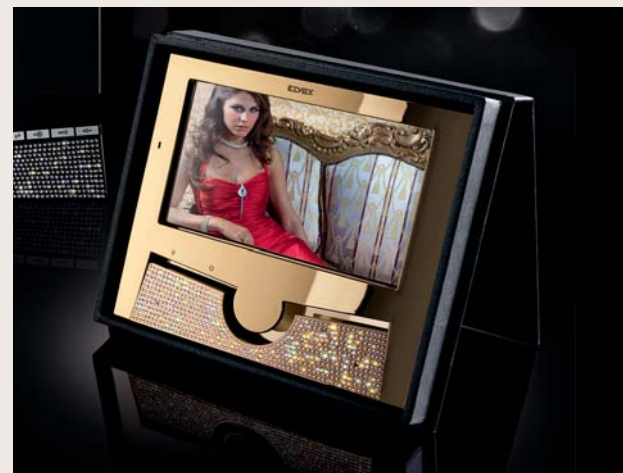


## Chrome-plated



Polished gold

“DREAMS COLLECTIONS”,  
MADE WITH SWAROVSKI® ELEMENTS  
is presented in an exquisite gift  
box



# 7200 SERIES

Flush wall-mounting open-voice monitor  
with 7" widescreen TFT LCD colour display

Item

Description

## 7200 SERIES MONITORS



Two-channel open-voice monitor in thermoplastic with hands-free function. Supplied with high-resolution monitor with 7" TFT LCD colour screen, 16:9 widescreen aspect ratio and loudspeaker for electronic call. Equipped with 8 backlit buttons for: door lock release, self-start, auxiliary services (stair light), intercom calls, conversation, internal voice line volume control, ringtone volume control and mute, selection of different ringtones, brightness control and removable terminal block. Dedicated indicators for door open and ringtone mute signals. Possibility of customising the monitor with interchangeable covers.

- 7211** Flush-mount monitor with 7" TFT LCD colour screen. For installation, requires back box type 7249. Supplied with white cover. Dimensions: 193x159x18 mm + 31 mm (flush-mounting)
- 7214** Flush-mount video entry phone with 7" TFT LCD colour screen, microcontroller for 4 or 8-digit encoding/decoding. For installation, requires back box type 7249. Supplied with white cover. Dimensions: 193x159x18 mm + 31 mm (flush-mounting)
- 7200** Flush-mount monitor with 7" TFT LCD colour screen. For installation, requires back box type 7249. Supplied with white cover. The monitor is used with power supply type 6680. Dimensions: 193x159x18 mm + 31 mm (flush-mounting)

### Cover



- 72BK** Metallic black cover
- 72BL** Metallic blue cover
- 72BZ** Metallic bronze cover
- 72GN** Metallic green cover
- 72RD** Metallic red cover
- 72SV** Metallic silver cover
- 72GD** Polished gold chrome cover

Item

Description

### ACCESSORIES



**720A** Desktop conversion kit for 7200 series door entry monitor. Complete with 2 metres of 12-conductor cable + 1 coaxial cable, equipped with an edge connector. Cable colour: white.



**7249** Flush-mounted back box for Wide Touch and 7200 series door entry monitors with protective cover. Dimensions: 189x160x52 mm

### 7200 series Two-Wire video door entry kit with 1200 panel

**7211/KI1**

7200 series colour video door entry kit comprising: 1 1200 series stainless steel flush-mount entrance panel with 1 call button (type 1221 + 9192), 1 electronic push-button unit with colour video camera and speech unit (type 12F5), 1 7200 series flush-mount monitor with 7" TFT LCD colour screen, 16:9 widescreen aspect ratio (type 7211 + 7249) 1 power supply unit type 6922



### 7200 series Two-Wire video door entry kit with 2590 panel

**72AP**

Pack for single residence colour system. Contents: 1 entrance panel with letterbox in stainless steel, for flush or surface wall mounting, with 1 call button, speech unit and colour video camera (type 259C/P), 1 7200 series flush-mounted monitor with 7" TFT LCD colour screen, 16:9 widescreen format (type 7200 + 7249), 1 power supply unit type 6680.



Item

Description

## COVER MADE WITH SWAROVSKI® ELEMENTS

### Cover



**72SC** Cover in chrome with SWAROVSKI® elements



**72SG** Cover in gold with SWAROVSKI® elements



**72SB** Cover in black with SWAROVSKI® elements



7200 SERIES

## Dreams Collection

Limited Edition

MADE WITH SWAROVSKI® ELEMENTS

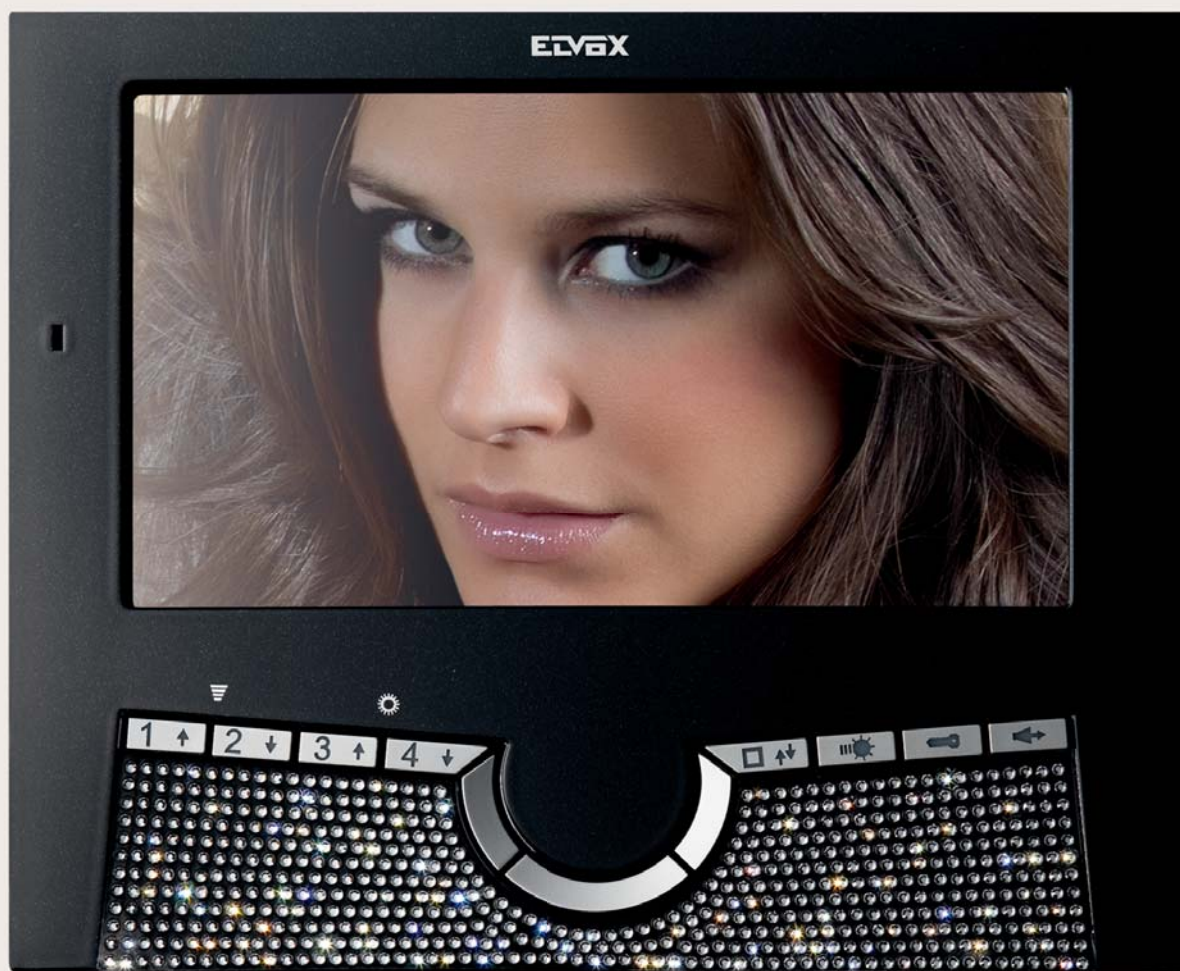


# 7200 SERIES

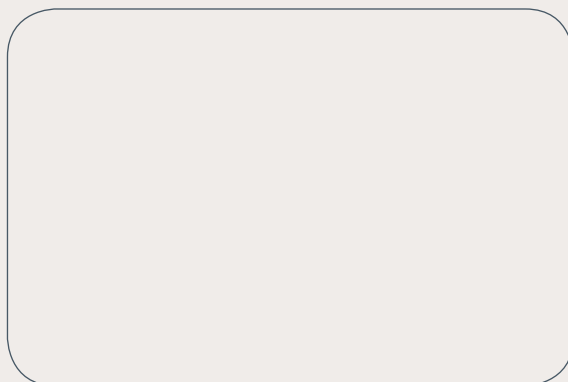
Flush wall-mounting open-voice monitor  
with 7" widescreen TFT LCD colour display

# EDVAX

 **VIMAR** group



 **see Kits**



**ELVOX**

 **VIMAR** group

Via Pontarola, 14/a  
35011 Campodarsego PD - Italy  
Tel. +39 049 920 2511  
Fax +39 049 920 2601  
[www.elvox.com](http://www.elvox.com) - [elvoxexp@elvox.com](mailto:elvoxexp@elvox.com)