

EDVAX

 **VIMAR** group



6600 SERIES

Open voice door entry monitor for flush mounting, surface wall mounting and desktop mounting with 4" and 3.5" TFT LCD colour display



6600 SERIES

Open voice door entry monitor for flush mounting, surface wall mounting and desktop mounting with 4" and 3.5" TFT LCD colour display



SOUNDSYSTEM



DUEFILELVOX



DIGIBUS

The **beauty** of communication

State-of-the-art, slim monitor: small in size, huge in appeal. Just one centimetre thick, this monitor has a distinctive style that transforms an everyday object into a piece of designer furnishing, capable of enhancing any home. Wall-mountable with vertical tilt facility, the video intercom is both elegant and functional, perfect for both the home or workplace thanks to its singular, fashionable design.

4" - 3.5"
TFT LCD
colour display

EDVEX

 **VIMAR** group



Also available
with **intercom calls**

6600 SERIES

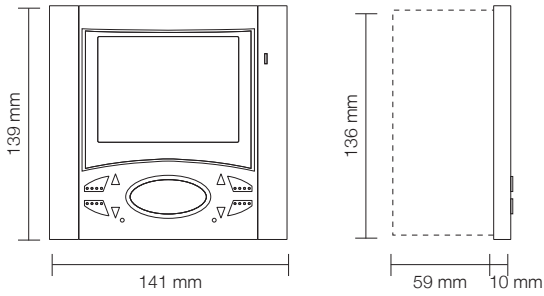
Open voice door entry monitor for flush mounting, surface wall mounting and desktop mounting with 4" and 3.5" TFT LCD colour display

Flush-mounting
version



4" - 3.5"

TFT LCD colour display



EDVAX

VIMAR group

Monitor installation requires flush-mounted back box type 6149 or kit R660 for plasterboard walls.



Maximum tilt equals total flexibility. The non-intercom version of video interphones with 4" and 3.5" monitor have an adjustable display to ensure consistently perfect viewing for all users.

Expand your horizons

- 4" and 3.5" TFT LCD display with maximum resolution and contrast possible for this format.
- Made of thermoplastic.
- Available in white, titanium or brushed steel finishes.
- Crystal-clear audio quality with loudspeaker ideally positioned for maximum acoustic performance.
- Eight buttons dedicated to the main video door entry functions.
- Possibility of operating auxiliary functions in the Two-Wire and Digibus versions, or intercommunicating calls in the Two-Wire version.
- Green LED "door open" signal.
- Privacy function which disables the ringtone. With the ringtone mute activated, in the Two-Wire and Digibus versions, a red LED will signal up to 5 unanswered calls by flashing a corresponding number of times.

6600 SERIES

Desktop version

Open voice door entry monitor for flush mounting, surface wall mounting and desktop mounting with 4" and 3.5" TFT LCD colour display

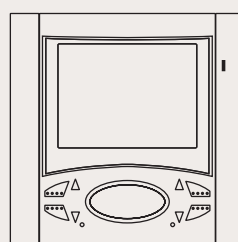


The desktop version is supplied with 2 metre cable, socket and removable plug.

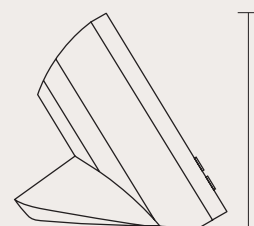
Beyond all **imagination**

The high-performance, highly efficient 6600 desktop open voice monitor captures immediate attention thanks to the ability of Elvox's designers to keep pace with the constant changes in contemporary tastes.

Also available in the intercom version, that can be used to link one or more groups without altering the main line and without blocking the rest of the system.



141 mm



125 mm

Surface wall-mounting version

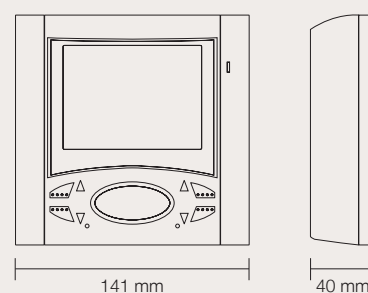
ELVOX

 **VIMAR** group



Eye-catching **appeal**

The graceful forms, meticulously crafted and elegantly understated, make the Elvox door entry monitor a genuine designer furnishing accessory to personalise the modern home. The surface wall-mounting version of the 6600 series open voice door entry monitor is 4 cm thick and can easily be fitted anywhere thanks to the quick coupling of the surface wall-mounting bracket.



6600 SERIES

Open voice door entry monitor for flush mounting, surface wall mounting and desktop mounting with 4" and 3.5" TFT LCD colour display



VIDEO DOOR ENTRY UNIT



White
code 660x/ - code 670x/



Titanium
code 660x/37 - code 670x/37



Brushed steel
code 660x/40 - code 670x/40

AUDIO DOOR ENTRY UNIT



White
code 660x/AU - code 670x/AU

INTERCOMMUNICATING* VIDEO DOOR ENTRY UNIT



White
code 661x/ - code 671x/

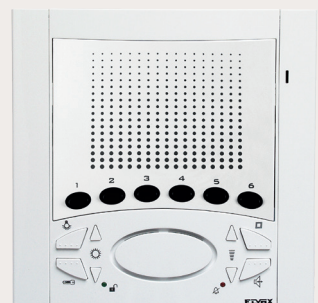


Titanium
code 661x/37 - code 671x/37



Brushed steel
code 661x/40 - code 671x/40

INTERCOMMUNICATING* AUDIO DOOR ENTRY UNIT



White
code 661x/AU - code 671x/AU

*6600 series intercommunicating audio and video door entry units are not available with Sound System technology. In the Two-Wire versions the additional push-buttons can be used for intercom calls or auxiliary services, or for auxiliary services in the Digibus versions.

Free your imagination

Metallic and painted finishes. A vast range of solutions that provides plenty of scope for personalisation based on one's own taste and creativity, thereby transforming a technical device into a novel furnishing accessory.

EDVAX

 **VIMAR** group



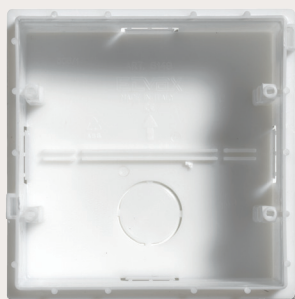
Desktop



Flush-mounting

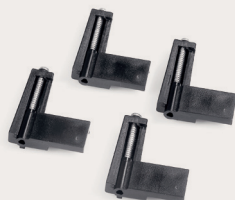


Surface wall-mounting



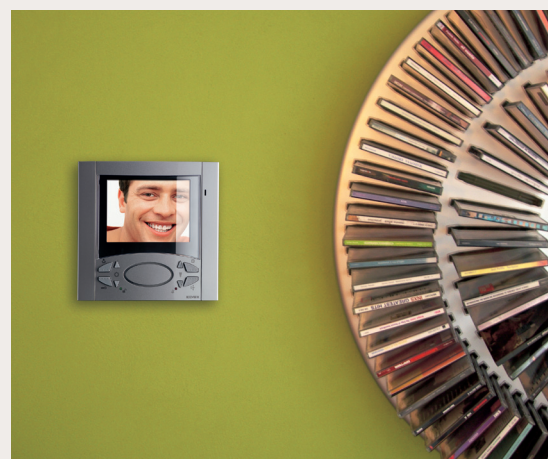
Type 6149
6800 series back box

Square back box (8P) for the 6800, 6600 and 6300 series. Dimensions: 136x136x59 mm



Type R660

Fixing kit for 6600 series flush-mounting video entry systems for gypsum plasterboard walls.



6600 SERIES

Open voice door entry monitor for flush mounting, surface wall mounting and desktop mounting with 4" and 3.5" TFT LCD colour display

Code

Description

6600 series monitors

Dual-channel open voice door entry monitor in thermoplastic with TFT LCD colour monitor and loudspeaker for electronic call. Equipped with 8 standard push-buttons for: lock release, auxiliary services (stair light), conversation, internal audio volume control, ringtone volume control and mute, ringtone selection, brightness control plus a removable terminal block. Supplied with illuminated indicators: red LED to indicate ringtone mute and green LED to indicate door open, when connected to a suitable lock or door.

Available colours: white (standard item, e.g. 6600), titanium (code .../37 e.g. 6600/37) and brushed steel (code .../40 e.g. 6600/40).

6600 series video door entry units for Two-Wire technology



- 6621** Flush-mounting door entry monitor with 3.5" TFT LCD colour screen and vertical tilt facility. Installation requires a flush-mounting back box art. 6149.
Colour: white.
Dimensions: 141x139x10 mm + 45 mm (flush-mounted).
The monitor must be used with power supply unit type 6922 or 6923.



- 6611** Flush-mounting door entry monitor with 3.5" TFT LCD colour screen (no tilt facility). Equipped with 6 additional programmable push-buttons, as well as the 8 standard push-buttons, for intercom calls or for auxiliary services. For installation, requires flush-mount back box art. 6149.
Colour: white.
Dimensions: 141x139x10 mm + 45 mm (flush-mounted).
The monitor must be used with power supply unit type 6922 or 6923.



- 6721** Surface wall-mounting door entry monitor with 3.5" TFT LCD colour screen and vertical tilt facility. Supplied with wall fixing bracket.
Colour: white.
Dimensions: 141x139x40 mm.
The monitor must be used with power supply unit type 6922 or 6923.



- 6711** Surface wall-mounting door entry monitor with 3.5" TFT LCD colour screen (no tilt facility). Equipped with 6 additional programmable push-buttons, as well as the 8 standard push-buttons, for intercom calls or for auxiliary services. Supplied with wall fixing bracket.
Colour: white.
Dimensions: 141x139x40 mm.
The monitor must be used with power supply unit type 6922 or 6923.



- 662C** Desktop monitor with 3.5" TFT LCD colour screen, vertical tilt facility, supplied with 2 metre cable, socket and removable plug.
Colour: white.
Dimensions: 141x125x125 mm.
The monitor must be used with power supply unit type 6922 or 6923.



- 661C** Desktop monitor with 3.5" TFT LCD colour screen (no tilt facility), supplied with 2 metre cable, socket and removable plug. Equipped with 6 additional programmable push-buttons, as well as the 8 standard push-buttons, for intercom calls or for auxiliary services.
Colour: white.
Dimensions: 141x125x125 mm.
The monitor must be used with power supply unit type 6922 or 6923.

Code

Description

6600 series video door entry units for Digibus technology



- 6604** Flush-mounting door entry monitor with 4" TFT LCD colour screen, vertical tilt facility, micro-controller for 4 or 8-digit encoding/decoding. For installation, requires flush-mounting back box art. 6149. Colour: white.
Dimensions: 141x139x10 mm + 45 mm (flush-mounted).
The monitor must be used with power supply unit type 6948.



- 6624** Flush-mounting door entry monitor with 3.5" TFT LCD colour screen, vertical tilt facility, micro-controller for 4 or 8-digit encoding/decoding. For installation, requires flush-mounting back box art. 6149. Colour: white.
Dimensions: 141x139x10 mm + 45 mm (flush-mounted).
The monitor must be used with power supply unit type 6948.



- 6614** Flush-mounting door entry monitor with 3.5" TFT LCD colour screen (no tilt facility), micro-controller for 4 or 8-digit encoding/decoding. Equipped with 6 additional programmable buttons, as well as the 8 standard buttons, for auxiliary services. For installation, requires flush-mount back box art. 6149. Colour: white.
Dimensions: 141x139x10 mm + 45 mm (flush-mounted).
The monitor must be used with power supply unit type 6948.



- 6704** Surface wall-mounting door entry monitor with 4" TFT LCD colour screen, vertical tilt facility, microcontroller for 4 or 8-digit encoding/decoding. Supplied with wall fixing bracket. Colour: white.
Dimensions: 141x139x40 mm
The monitor must be used with power supply unit type 6948.



- 6724** Surface wall-mounting door entry monitor with 3.5" TFT LCD colour screen, vertical tilt facility, microcontroller for 4 or 8-digit encoding/decoding. Supplied with wall fixing bracket. Colour: white.
Dimensions: 141x139x40 mm.
The monitor must be used with power supply unit type 6948.



- 6714** Surface wall-mounting door entry monitor with 3.5" TFT LCD colour screen (no tilt facility), microcontroller for 4 or 8-digit encoding/decoding. Equipped with 6 additional programmable buttons, as well as the 8 standard buttons, for auxiliary services. Supplied with wall fixing bracket. Colour: white.
Dimensions: 141x139x40 mm
The monitor must be used with power supply unit type 6948.



- 660D** Desktop monitor with 4" TFT LCD colour screen, vertical tilt facility, microcontroller for 4 or 8-digit encoding/decoding. Supplied with 2 metre cable with 13 conductors + 1 coaxial, and removable plug and socket.
Colour: white.
Dimensions: 141x125x125 mm.
The monitor must be used with power supply unit type 6948.
- 661D** Flush-mounting door entry monitor with 3.5" TFT LCD colour screen (no tilt facility), micro-controller for 4 or 8-digit encoding/decoding. Supplied with 2 metre cable with 13 conductors + 1 coaxial, and removable plug and socket.
Colour: white.
Dimensions: 141x125x125 mm
The monitor must be used with power supply unit type 6948.

6600 SERIES

Open voice door entry monitor for flush mounting, surface wall mounting and desktop mounting with 4" and 3.5" TFT LCD colour display

Code	Description
6600 series video door entry units for Sound System technology	
	6600 Flush-mounting door entry monitor with 4" TFT LCD colour screen and vertical tilt facility. Installation requires flush-mounting back box art. 6149. Colour: white. Dimensions: 141x139x10 mm + 45 mm (flush-mounted). The monitor must be used with power supply unit type 6680.
	6620 Flush-mounting door entry monitor with 3.5" TFT LCD colour screen and vertical tilt facility. For installation, requires flush-mount back box art. 6149. Colour: white. Dimensions: 141x139x10 mm + 45 mm (flush-mounted). The monitor must be used with power supply unit type 6680.
	6700 Surface wall-mounting door entry monitor with 4" TFT LCD colour screen and vertical tilt facility. Supplied with wall fixing bracket. Colour: white. Dimensions: 141x139x40 mm. The monitor must be used with power supply unit type 6680.
	6720 Surface wall-mounting door entry monitor with 3.5" TFT LCD colour screen and vertical tilt facility. Supplied with wall fixing bracket. Colour: white. Dimensions: 141x139x40 mm. The monitor must be used with power supply unit type 6680.
	660A Desktop monitor with 4" TFT LCD colour screen and vertical tilt facility. Supplied with 2 metre cable with 13 conductors + 1 coaxial, and removable plug and socket. Colour: white. Dimensions: 141x125x125 mm. The monitor must be used with power supply unit type 6680.
6600 series audio door entry units	
Two-channel open voice audio door entry unit in thermoplastic with loudspeaker for electronic call. Equipped with 8 standard push-buttons for: lock release, self-start, auxiliary services (stair light), conversation, internal audio volume control, ringtone volume control and mute, ringtone selection plus a removable terminal block. Supplied with illuminated indicators: red LED to indicate ringtone mute and green LED to indicate door open, when connected to a suitable lock or door. Available colours: white (standard item, e.g. 6600/AU), titanium (code .../AU.37 e.g. 6600/AU.37) and brushed steel (code .../AU.40 e.g. 6600/AU.40).	
6600 series audio door entry units for Two-Wire technology	
	6601/AU Flush-mounting interphone. For installation, requires flush-mount back box art. 6149. Colour: white. Dimensions: 141x139x10 mm + 45 mm (flush-mounted). The interphone must be used with power supply unit type 6922 or 6923.
	6611/AU Flush-mounting interphone. Equipped with 6 additional programmable buttons, as well as the 8 standard buttons, for intercom calls or auxiliary services. For installation, requires flush-mount back box art. 6149. Colour: white. Dimensions: 141x139x10 mm + 45 mm (flush-mounted). The interphone must be used with power supply unit type 6922 or 6923.

Code	Description
	<p>6701/AU Surface wall-mounting interphone. Supplied with wall fixing bracket. Colour: white Dimensions: 141x139x40 mm The interphone must be used with power supply unit type 6922 or 6923.</p>
	<p>6711/AU Surface wall-mounting interphone. Equipped with 6 additional programmable buttons, as well as the 8 standard buttons, for intercom calls or auxiliary services. Supplied with wall fixing bracket. Colour: white. Dimensions: 141x139x40 The interphone must be used with power supply unit type 6922 or 6923.</p>
	<p>660C/AU Desktop interphone, supplied with 2 metre cable, socket and removable plug. Colour: white. Dimensions: 141x125x125 mm. The interphone must be used with power supply unit type 6922 or 6923.</p>
6600 series audio door entry units for Digibus technology	
	<p>6604/AU Flush-mounting interphone with microcontroller for 4 or 8-digit encoding/decoding. For installation, requires flush-mounting back box art. 6149. Colour: white. Dimensions: 141x139x10 mm + 45 mm (flush-mounted). The interphone must be used with power supply unit type 6941 or 6948.</p>
	<p>6704/AU Surface wall-mounting interphone with microcontroller for 4 or 8-digit encoding/decoding. Supplied with wall fixing bracket. Colour: white. Dimensions: 141x139x40 mm The interphone must be used with power supply unit type 6941 or 6948.</p>
	<p>660D/AU Desktop interphone with microcontroller for 4 or 8-digit encoding/decoding. Supplied with 2 metre cable with 13 conductors + 1 coaxial, and removable plug and socket. Colour: white. Dimensions: 141x125x125 mm. The interphone must be used with power supply unit type 6941 or 6948.</p>
6600 series audio door entry units for Sound System technology	
	<p>6600/AU Flush-mounting interphone. For installation, requires flush-mounting back box art. 6149. Colour: white. Dimensions: 141x139x10 mm + 45 mm (flush-mounted). The interphone must be used with power supply unit type 931+6582+170/001 or 6680.</p>
	<p>6700/AU Surface wall-mounting interphone. Supplied with wall fixing bracket. Colour: white. Dimensions: 141x139x40 mm The interphone must be used with power supply unit type 931+6582+170/001 or 6680.</p>
	<p>660A/AU Supplied with 2 metre cable with 13 conductors + 1 coaxial, and removable plug and socket. Colour: white. Dimensions: 141x125x125 mm. The interphone must be used with power supply unit type 931+6582+170/001 or 6680.</p>

6600 SERIES

Open voice door entry monitor for flush mounting, surface wall mounting and desktop mounting with 4" and 3.5" TFT LCD colour display

Code

Description

6600 series Two-Wire video door entry kit and 8000 series panel

6621/K

Colour video door entry kit comprising: 1 8000 series flush-mounting panel in light grey with 1 call button (type 89F5/C1 + 9192 + 8092), complete with colour video camera, speech unit and "ENGAGED-PLEASE WAIT" indicator, 1 6600 series flush-mounting monitor in white with 3.5" TFT LCD colour screen and flush-mounting back box (type 6621 + 6149), 1 6922 power supply unit.

6611/K

Colour video door entry kit comprising: 1 8000 series flush-mounting panel in light grey with 1 call button (type 89F5/C1 + 9192 + 8092), complete with colour video camera, speech unit and without "ENGAGED-PLEASE WAIT" indicator, 1 6600 series flush-mounting monitor in white with 3.5" TFT LCD colour screen, 6 additional push-buttons and flush-mounting back box (type 6611 + 6149), 1 6922 power supply unit.

6600 series Two-Wire video door entry kit and 1200 series panel

6611/Ki1

Colour video door entry kit comprising: 1 1200 series flush-mounting panel in stainless steel with 1 call button (type 1221 + 12F5 + 9192), complete with colour video camera, speech unit and without "ENGAGED-PLEASE WAIT" indicator, 1 6600 series flush-mounting monitor in white with 3.5" TFT LCD colour screen, 6 additional push-buttons and flush-mounting back box (type 6611 + 6149), 1 6922 power supply unit.

Code

Description

6600 series Sound System video door entry kit and 8000 series panel

66CG

Colour video door entry kit comprising: 1 8000 series flush-mounting panel in light grey with 1 call button (type 8T19+80C1+8082+9192), 1 colour video camera with speech unit type 559C, 1 6600 series flush-mounting monitor in white with 4" TFT LCD colour screen and flush-mounting back box (type 6600 + 6149), 1 6680 power supply unit.



67CG

Colour video door entry kit comprising: 1 8000 series flush-mounting panel in light grey with 1 call button (type 8T19+80C1+8082+9192), 1 colour video camera with speech unit type 559C, 1 6600 series flush-mounting monitor in white with 4" TFT LCD colour screen (type 6700), 1 6680 power supply unit.



67CG/2

Colour video door entry kit comprising: 1 8000 series flush-mounting panel in light grey with 2 call buttons (type 8T19+80C2+8082+9192), 1 colour video camera with speech unit type 559C, 2 6600 series flush-mounting monitors in white with 4" TFT LCD colour screen (type 6700), 1 6680 power supply unit.

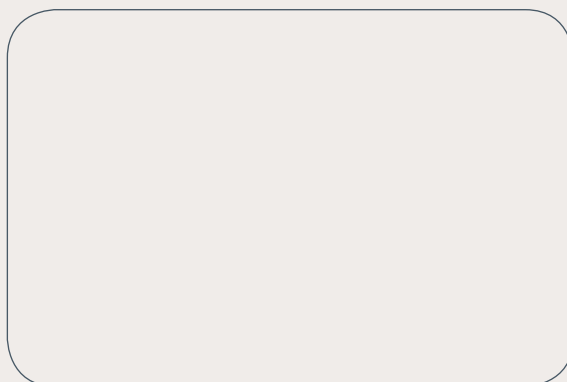


6600 series Sound System video door entry kit and 1200 series panel

66CI

Colour video door entry kit comprising: 1 1200 series flush-mounting panel in stainless steel with 1 call button (type 1221 + R200 + R260 + 9192), 1 colour video camera with speech unit type 559B, 1 6600 series flush-mounting monitor in white with 4" TFT LCD colour screen and flush-mounting back box (type 6600 + 6149), 1 6680 power supply unit.





ELVOX

 **VIMAR** group

Via Pontarola, 14/a
35011 Campodarsego PD - Italy
Tel. +39 049 920 2511
Fax +39 049 920 2601
www.elvox.com - elvoxexp@elvox.com