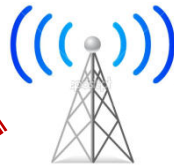


Door Entry Direct

- Up to 8 button GSM intercom using mobile cell phone networks, 850/900/1800/1900 MHz bands.
- 2 piece design, just a speech panel with everything inside, and a wall mount antenna.
- No range limit.
- Rings up to 3 telephone numbers in sequence when call button pressed.
- Gate / Door release relay built in, simply press the star key to open!
- Access control for up to 100 numbers using caller ID, at no call cost to users (ring intercom to open gate or door).



SIEMENS
CINTERION
WIRELESS MODULES
INSIDE



Unlimited range

3 numbers per button
X 8 buttons = 24 numbers



4m



Volt free momentary output



Technical Specifications

Range	Unlimited using cellular network	Antenna	Quad band 3dBi high gain
Supply voltage	12v d.c. (110-220v adaptor included)	Power consumption	200mA dial, 30mA standby
IP rating	IP65	Output 1	1 x N/O or N/C relay volt free
GSM	Quad band 850/900/1800/1900MHz	Output2	1 x 12v output momentary
Wiring	N/A	Caller ID access	100 numbers or pass code mode



GSM-800V range (polished steel).
1-8 buttons, with or without keypad.

- GSM-800V2 – 2 button
- GSM-800V3 – 3 button
- GSM-800V4 – 4 button
- GSM-800V5 – 5 button
- GSM-800V6 – 6 button
- GSM-800V8 – 8 button
- GSM-800VK2 – 2 button + keypad
- GSM-800VK3 – 3 button + keypad
- GSM-800VK4 – 4 button + keypad
- GSM-800VK5 – 5 button + keypad
- GSM-800VK6 – 6 button + keypad
- GSM-800VK8 – 8 button + keypad



GSM-800S (Stainless steel).
1-8 buttons, with or without keypad,

- GSM-800S2 – 2 button
- GSM-800S4 – 4 button
- GSM-800S6 – 6 button
- GSM-800S8 – 8 button
- GSM-800SK2 – 2 button + keypad
- GSM-800SK4 – 4 button + keypad
- GSM-800SK6 – 6 button + keypad
- GSM-800SK8 – 8 button + keypad



GSM-800TX
GSM transmitter & antenna